

Senior Design - Spring 2008

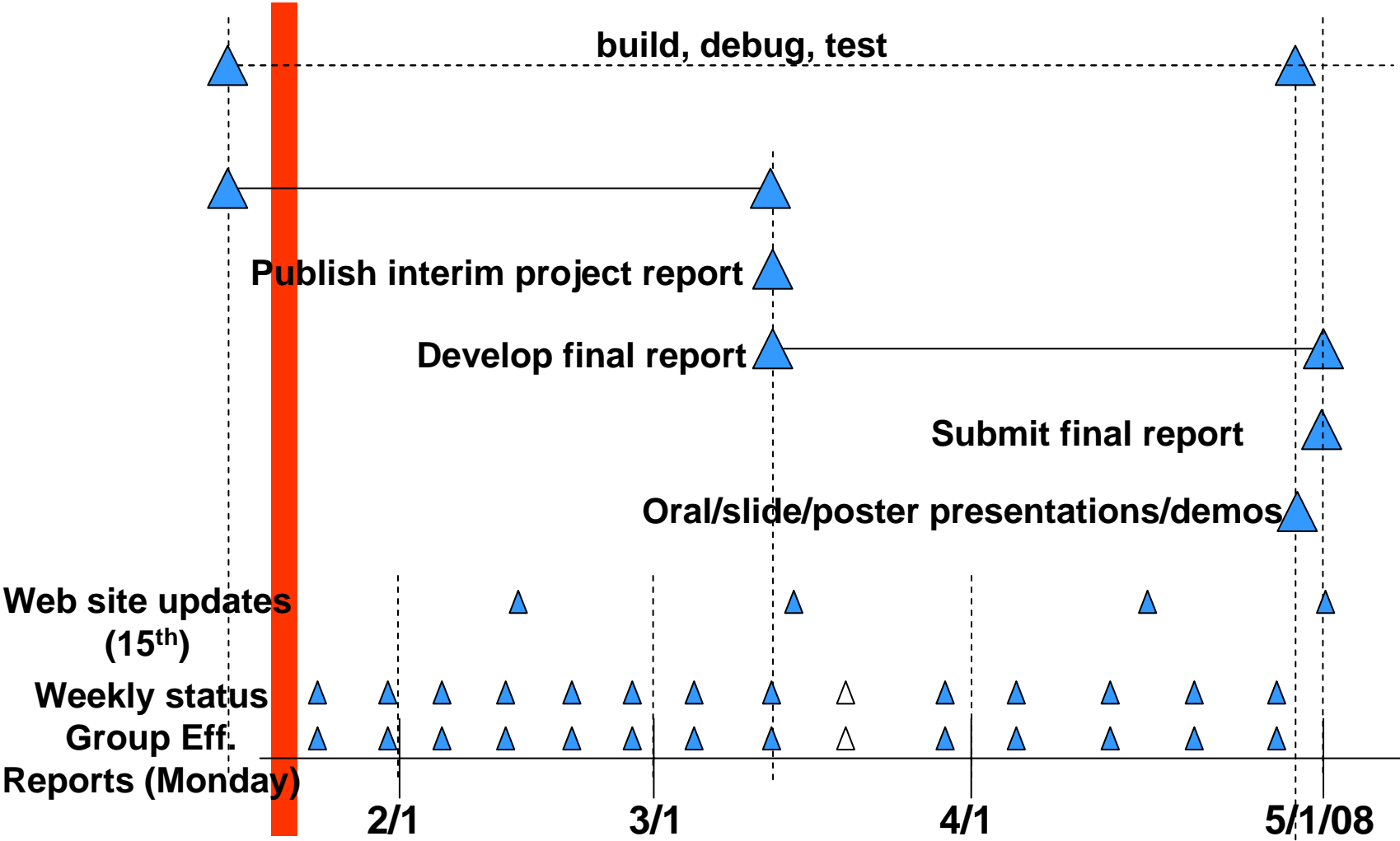
EE/CpE 424

Class 1 – 1/15/08

Outline

- Spring 2008 tasks
- Fall 2007 grades
- Upcoming priorities, class schedule, announcements

Senior Design Tasks – Spring '08



Today

Design Day: 4/23

Senior Design Grading Fall '07

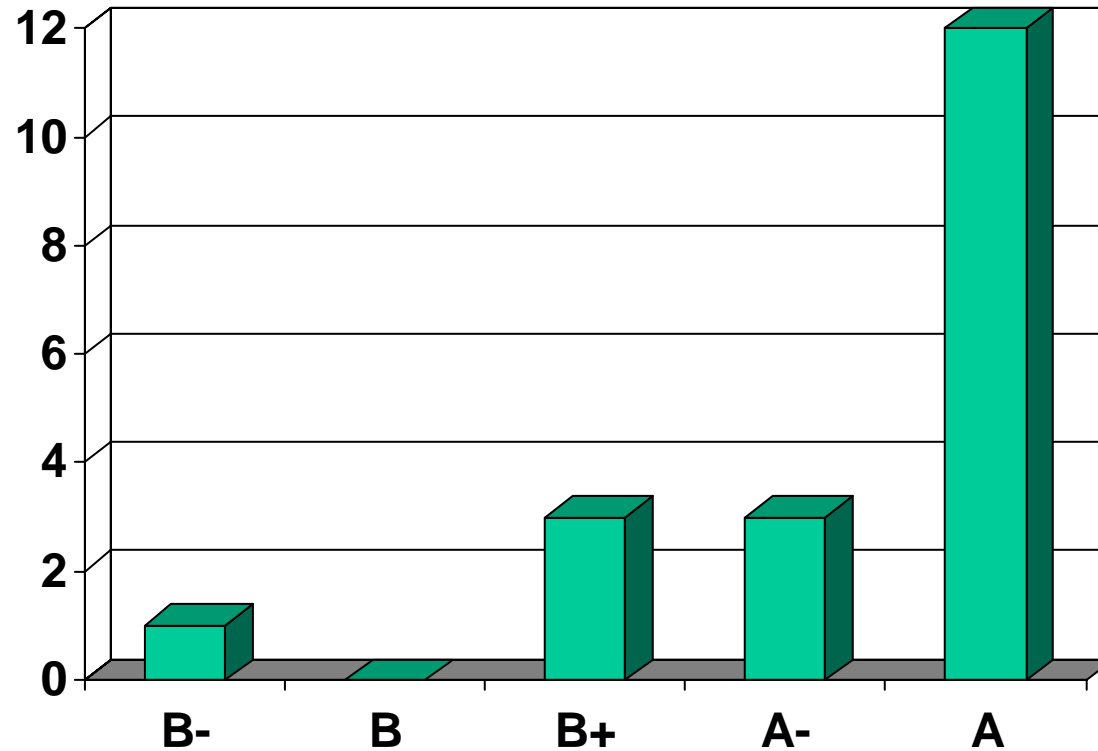
Each group's faculty advisor determined 80% of group's grade.
Each advisor set criteria appropriate to the project and their policies.
For groups I advised, this part of the grade was based on:

Use of appropriate engineering judgment	25%
Appropriate level of effort	25%
Establishing a realistic schedule and adhering to it	25%
Responsiveness to advisor feedback	25%

As course coordinator I determined 20% of grade, based on

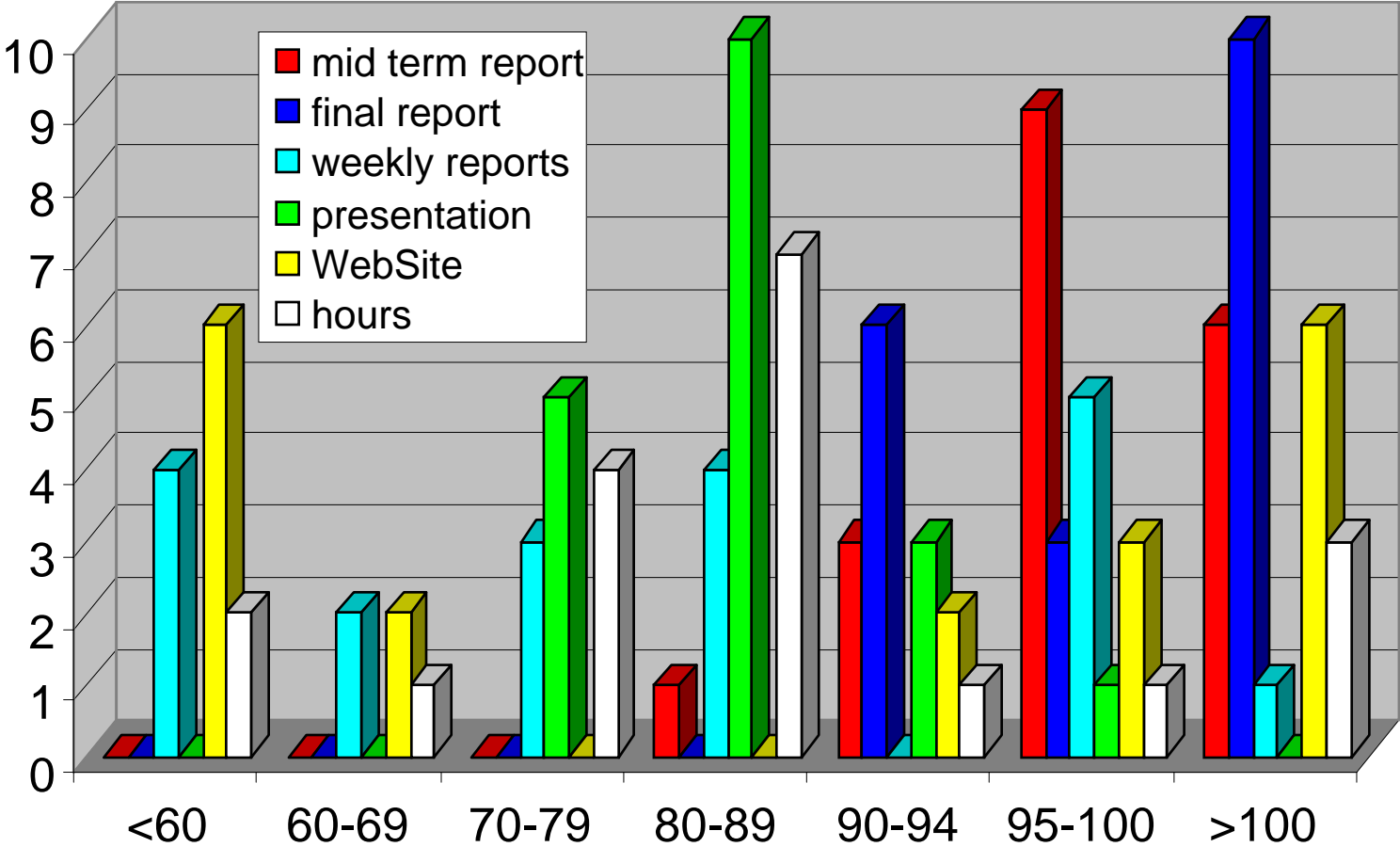
Timeliness, completeness of deliverables	20%
Initial project proposal	20%
Presentation	10%
Web site	10%
Final project proposal/Component list	20%
Overall Effort	20%

Senior Design Fall '07 Final Grades

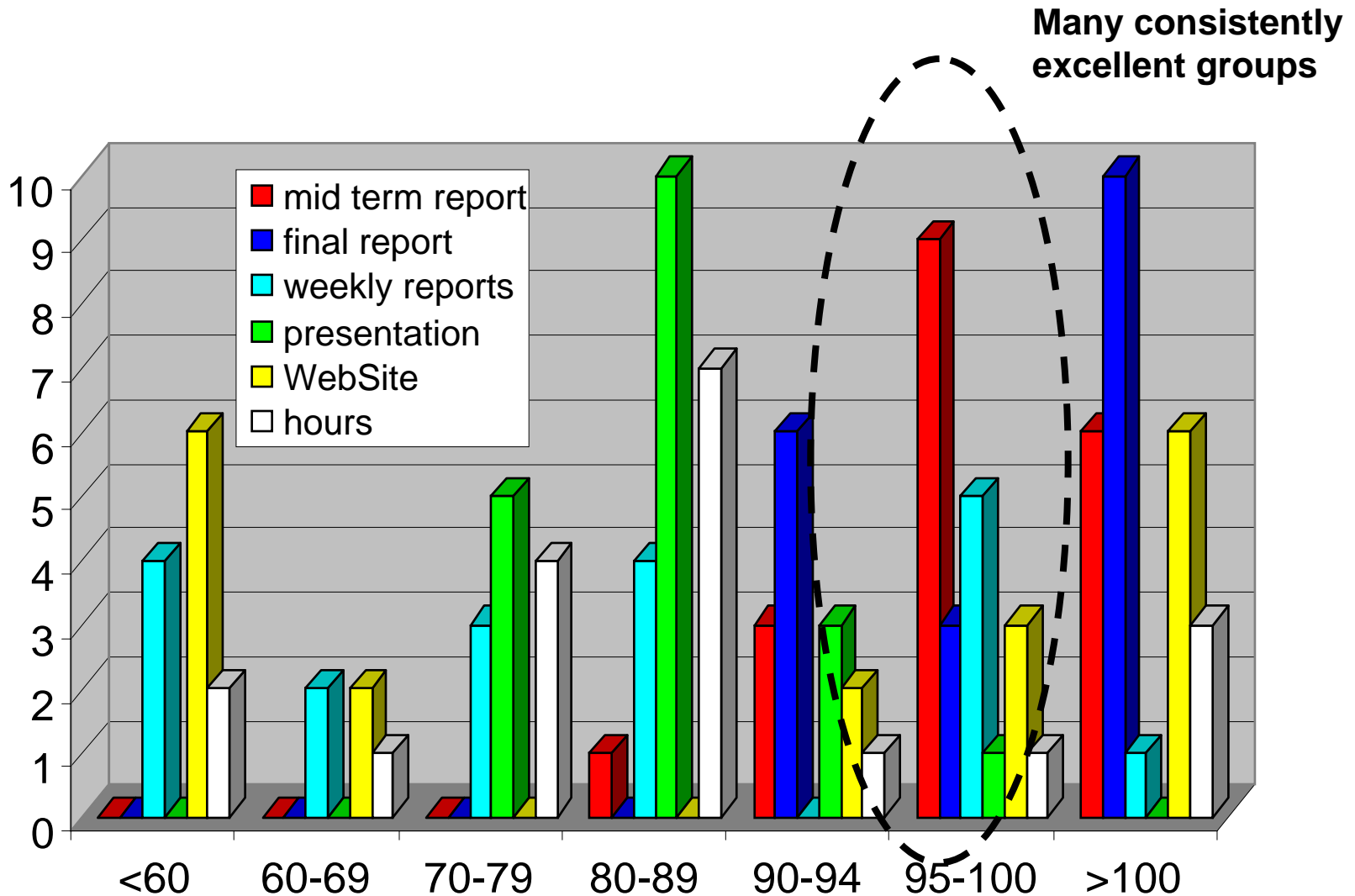


Note: 3 group grades are average grades – some members were given individual grades

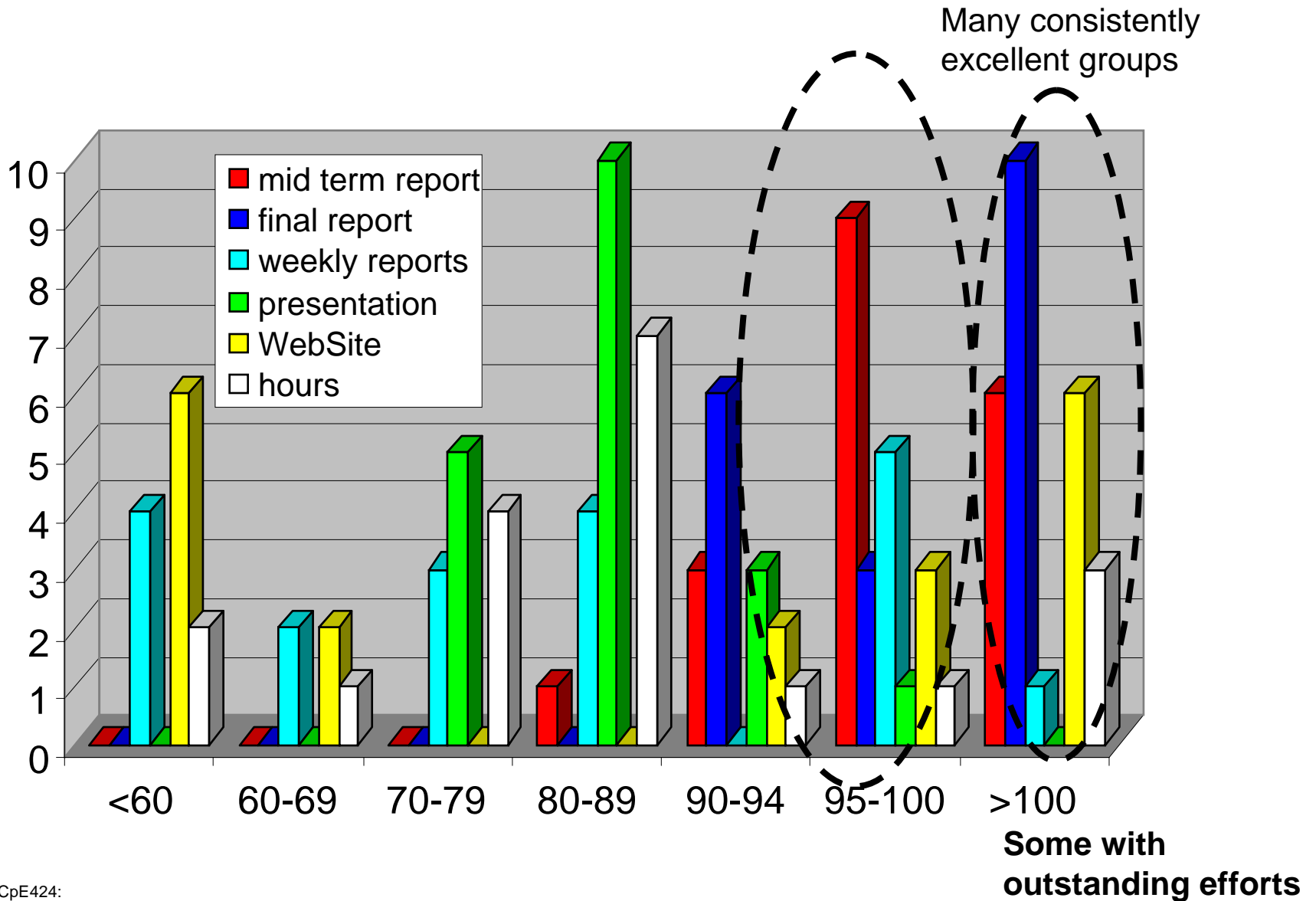
Components of Coordinator Grade



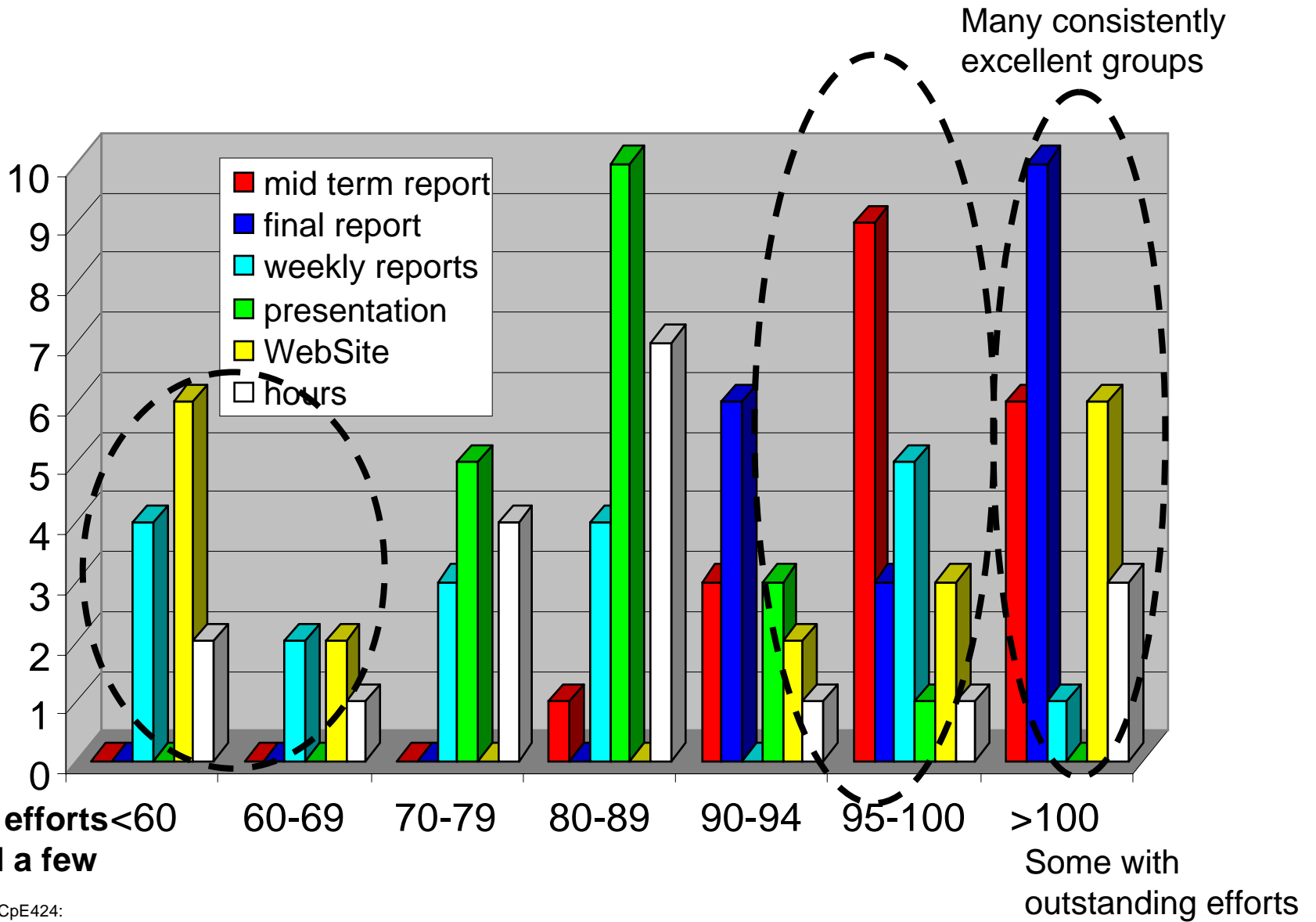
Components of Coordinator Grade



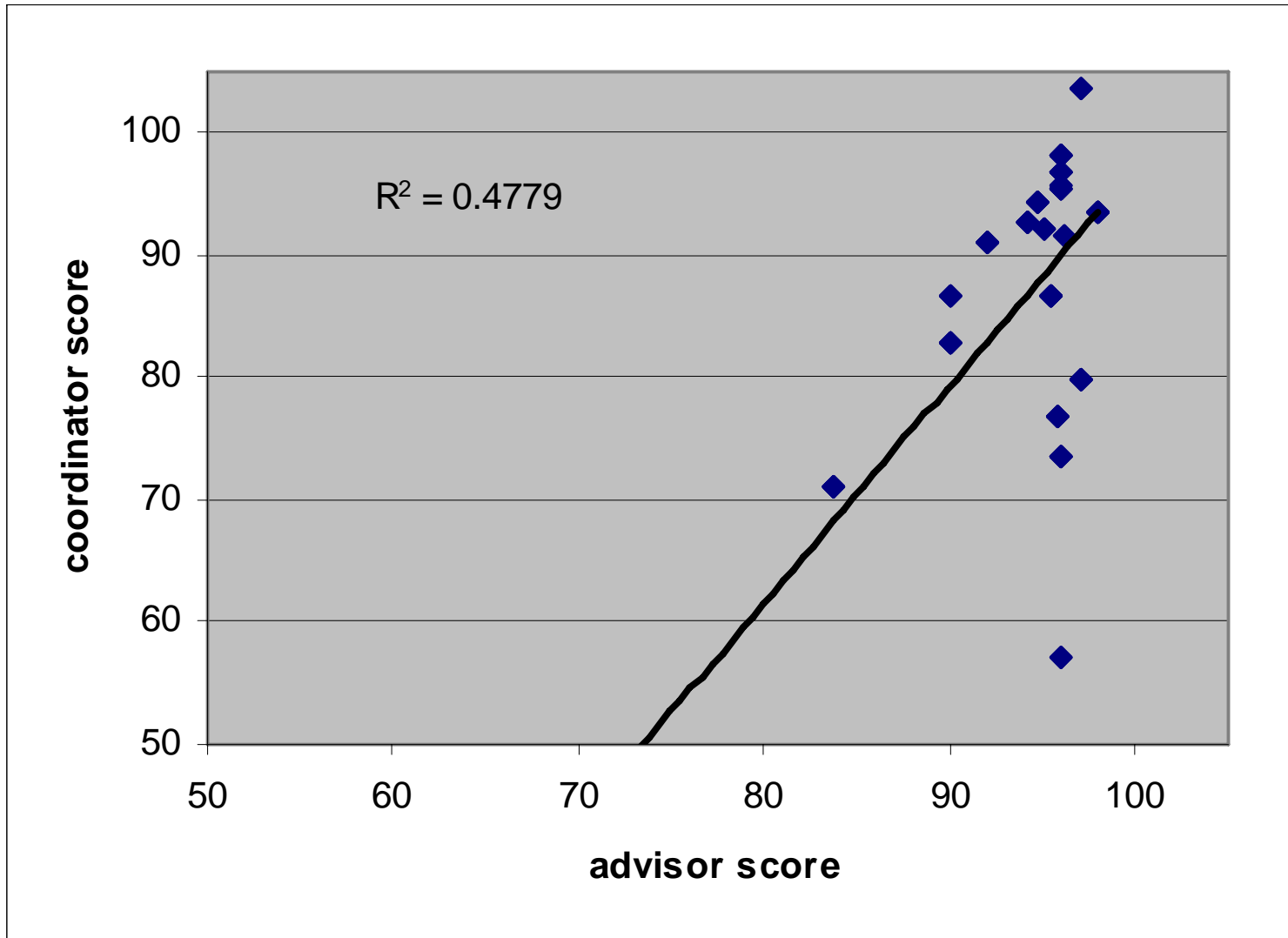
Components of Coordinator Grade



Components of Coordinator Grade



Grade Correlation



Deliverables Schedule

- Weekly reports are due **weekly** by Noon, Monday.
 - Both Group Weekly reports and individual group effectiveness reports.
 - To ensure proper credit, email separately
 - Attachment **MUST** be labeled as:
Course_number-Stevens_email_ID-Group#-submission_info
e.g., EE424-bmcnair-Group27-weekly_report.doc
- Web sites will be graded the 15th of each month. **All** weekly reports, interim and final reports, presentations, and brochures must be posted on web site immediately after due date, hosted on panda.ece.stevens-tech.edu
- Interim project report due Tuesday before Spring Break (3/11/08)
- Design Day is April 23rd
 - Details will be provided later including Design Day brochure requirements
 - Electrical power, network connections, and other needs will be identified
~midterm
- Final Report due Tuesday, April 29th

Other items

- Senior Design expense reimbursement:
 - At the end of the semester
 - For items required for Senior Design
 - \$250 per group
 - Items that are paid for by the ECE Department must be returned to the ECE Department
- Class schedule:
 - If we meet, it will be 3-4 on Tuesday
 - Classes will meet less frequently in Spring than in Fall
 - You should be working with groups and advisor.
- Lab equipment and supplies
 - Half of B213 has been converted to a lab, well stocked with test equipment
 - See me for specialty items and passive components
 - Coordinate lab space access with Mary Schurgot
 - See Stu Tewksbury or me to borrow test equipment
- Award\$:
 - Rochester Institute of Technology IEEE Student Design Competition
 - Senior Design Technogenesis Awards
 - Farleigh Dickenson IEEE competition