

EE/CpE 423

Senior Design

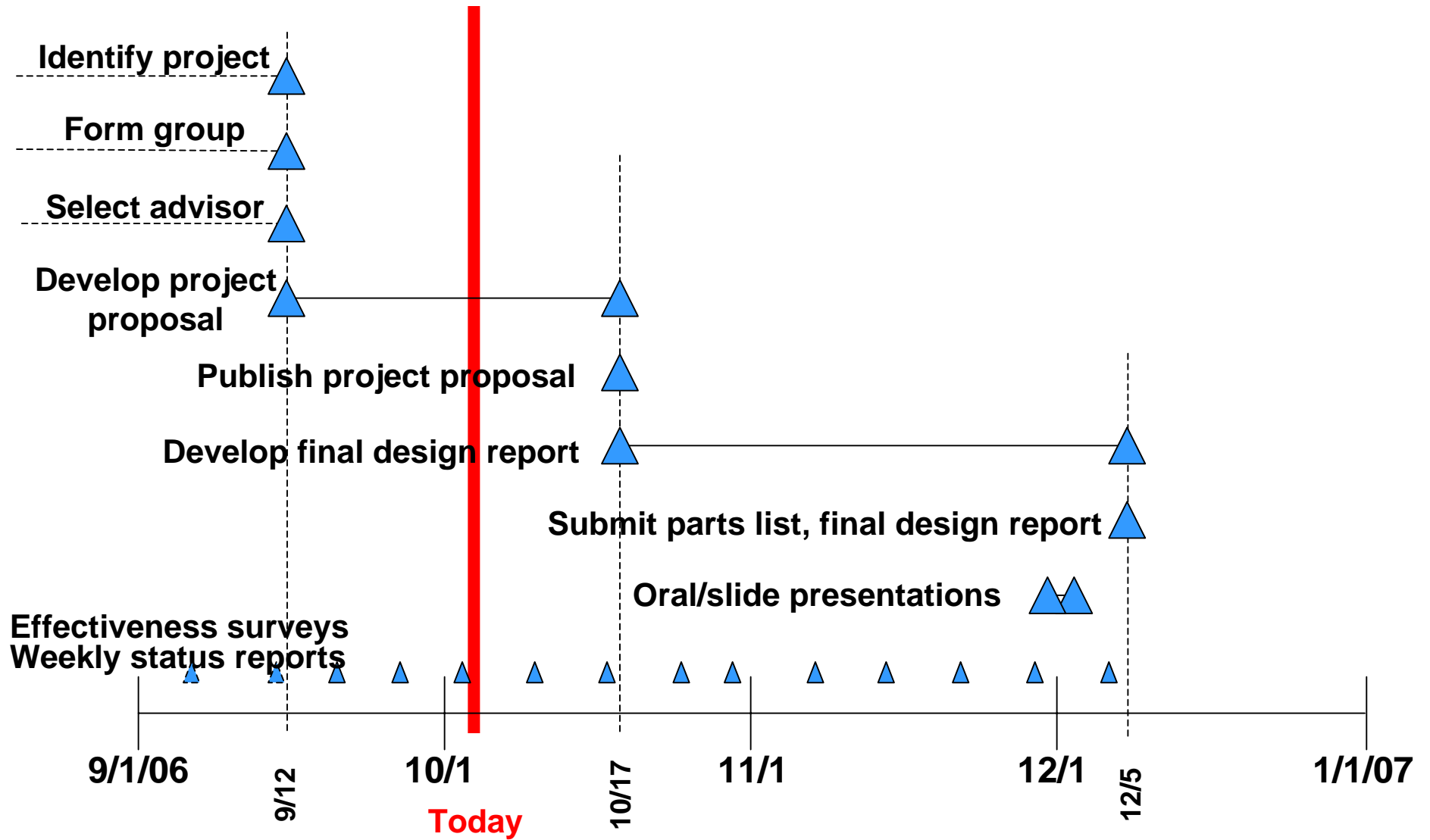
Fall 2006

Class 7 – 10/24/06

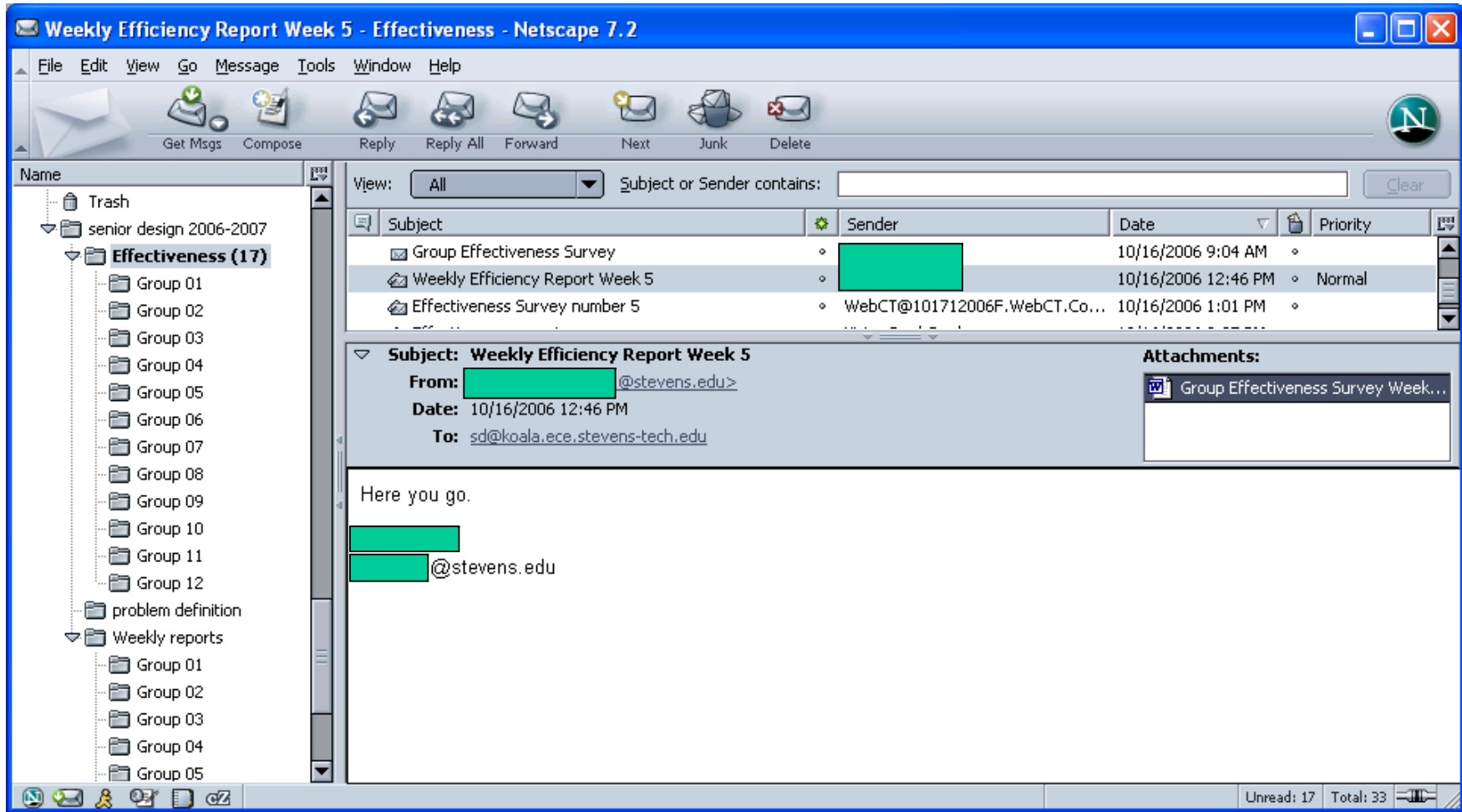
Agenda

- Task schedule
- Logistics
- Fall presentations
- Linda Scanlon & Valerie Forrestal: On-line research services provided by the Stevens Library

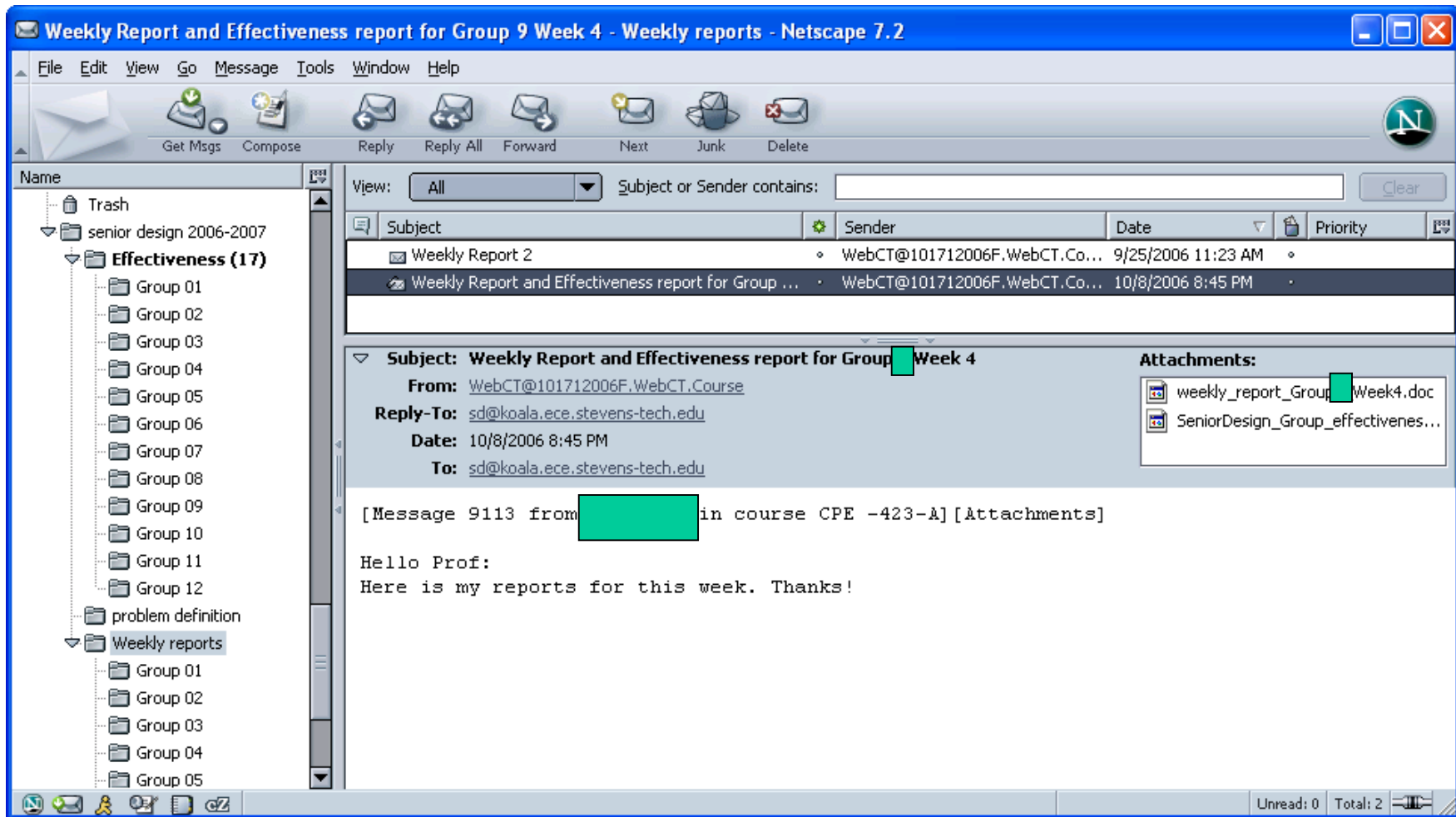
Senior Design Tasks – Fall '06



What's Wrong With This Picture?



What's Wrong With This Picture?



Fall '06 Presentation Schedule

| Tuesday, November 28 | | |
|----------------------|----------|---|
| Time | Group | Project |
| 3:00 – 3:20 | 8 | Unwired Cognitively Allocated Networking: Frequency Converter |
| 3:20 – 3:40 | 7 | Location Estimation of Stationary and Mobile Users in Wireless LAN |
| 3:40 – 4:00 | 9 | Unwired Cognitively Allocated Networking: Tunable antenna & FPGA-based control |
| 4:00 – 4:20 | 5 | Intelligent Autonomous Search System - NOA (Navigation and Obstacle Avoidance) |
| 4:20 – 4:40 | 6 | Intelligent Autonomous Search System - ESI (Embedded Systems Infrastructure) |
| 4:40 – 5:00 | 2 | Electronic Scoring Archer |
| 5:00 – 5:20 | | |

| Tuesday, December 5 | | |
|---------------------|-----------|----------------------------------|
| Time | Group | Project |
| 3:00 – 3:20 | 3 | MIMO ComBlock Wireless Testbed |
| 3:20 – 3:40 | 4 | Noise Canceling Window |
| 3:40 – 4:00 | 10 | Emergency Communications Systems |
| 4:00 – 4:20 | 1 | Wireless Power Control |
| 4:20 – 4:40 | 11 | Wireless Drifter |
| 4:40 – 5:00 | 12 | Velocity of a Runner |
| 5:00 – 5:20 | | |

Fall '06 Presentation Requirements

- All group members must be present. The group will determine how to organize their speakers
- Arrive AT LEAST 20 minutes before your scheduled time.
- Attendance will not be taken, but if you attend other groups' presentations, you might be in a better position to see what questions will be asked of your group.
- Any group that misses their scheduled presentation time will go to the end of the schedule. The next group will be moved to the earlier time slot. If we have time at the end of the schedule, groups that missed their presentation slot MAY have a chance to give their (required) talk.
- Presentations must be in PowerPoint 2000 (or earlier) format
- Presentations must be emailed to me by 12:00 PM (Noon) the day of your presentation. Presentations sent after Noon are not guaranteed to be available for your scheduled time slot. No alternative means of delivery will be provided (e.g., USB, CD-R, your laptop).
- Revised presentations delivered after Noon may or may not replace the original submission