

Senior Design - Spring 2006

EE/CpE 424

Class 1 – 1/17/06

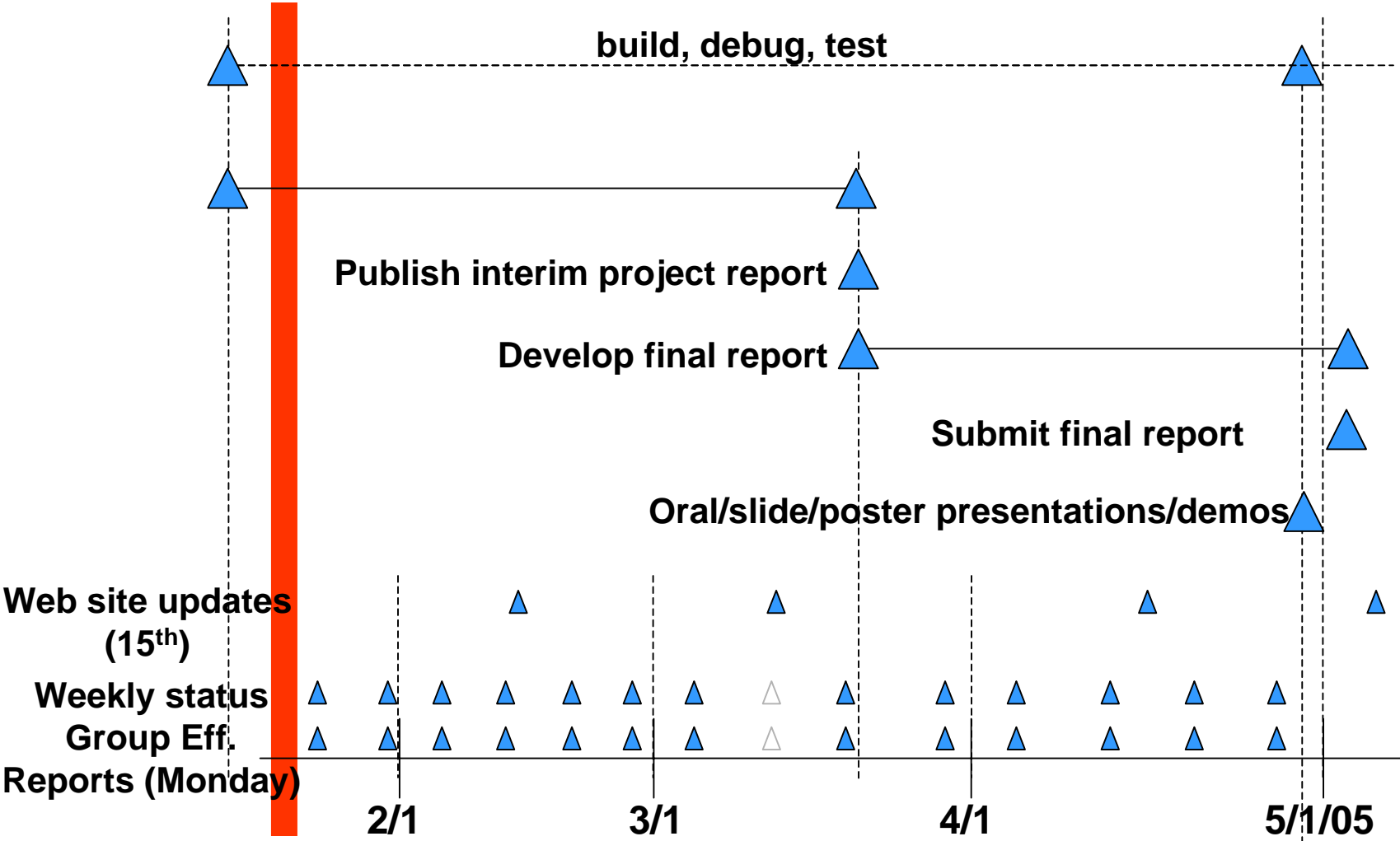
Outline

- Announcements
- Spring 2006 tasks
- Fall 2005 grades
- Upcoming priorities, class schedule

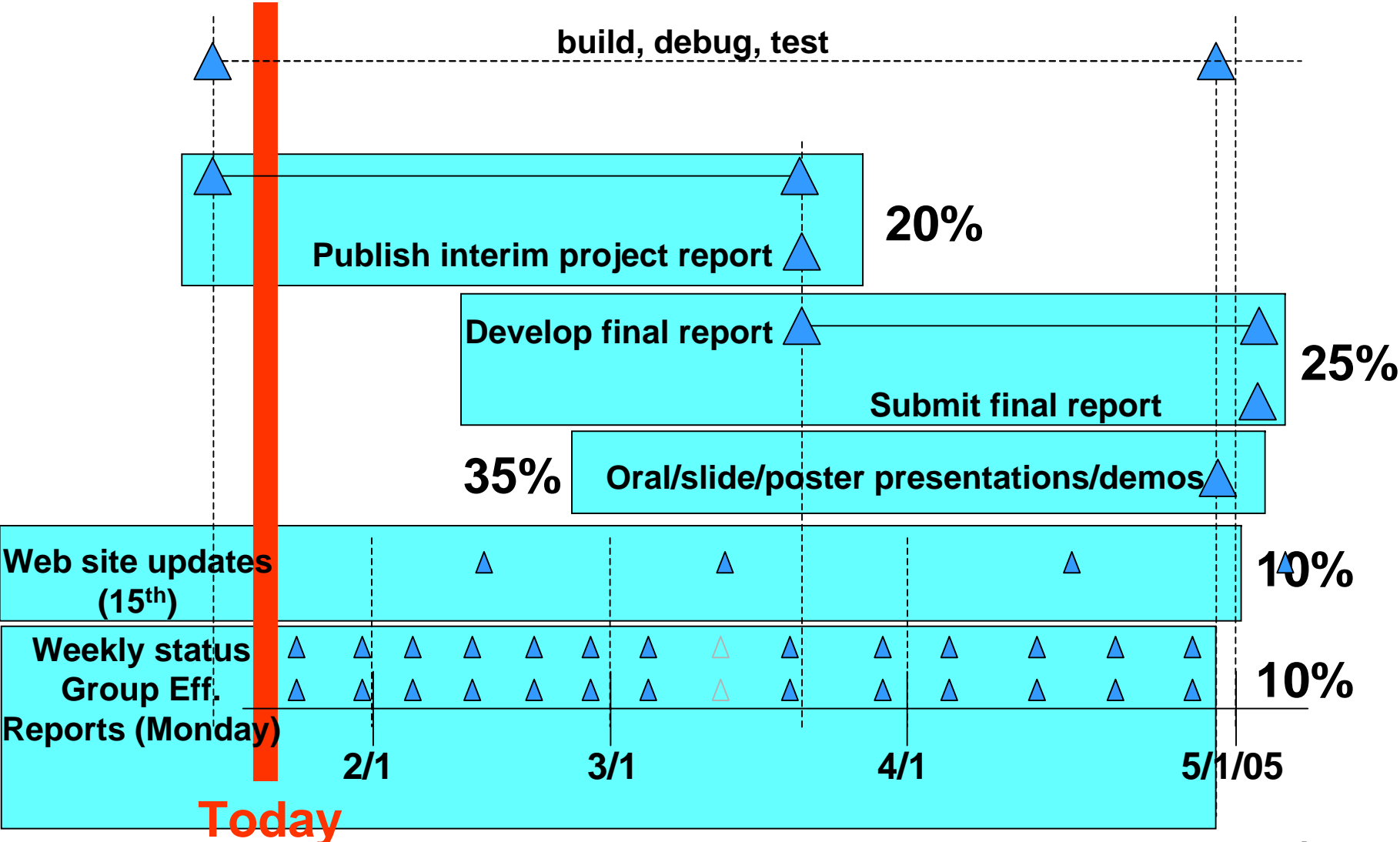
Announcements

- New Senior Design TA: Palak Amin '03 pamin@stevens.edu
- 91 students were registered Fall '05,
- 86 (Web for Faculty) or 87 (WebCT) are currently registered.
 - Let me know ASAP if there are any registration problems.

Senior Design Tasks – Spring '06



Senior Design Tasks – Spring '06



Senior Design Grading Fall '05

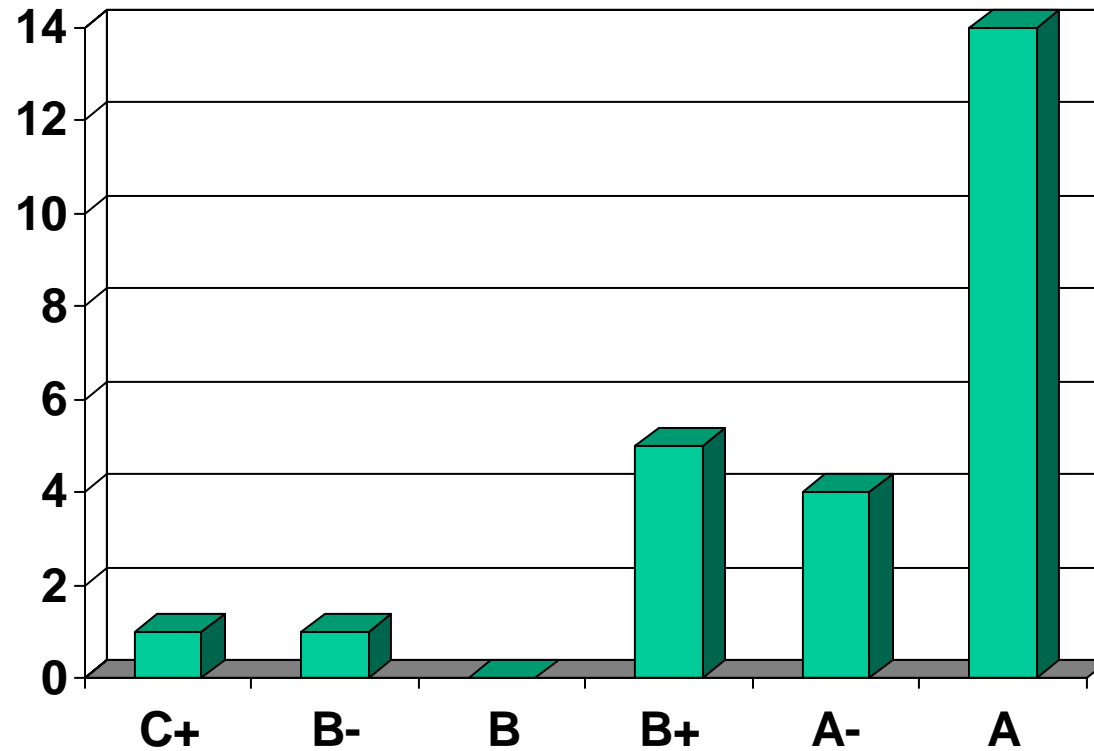
Each group's faculty advisor determined 80% of group's grade.
Each advisor set criteria appropriate to the project and their policies.
For groups I advised, this part of the grade was based on:

Use of appropriate engineering judgment	25%
Appropriate level of effort	25%
Establishing a realistic schedule and adhering to it	25%
Responsiveness to advisor feedback	25%

As course coordinator I determined 20% of grade, based on

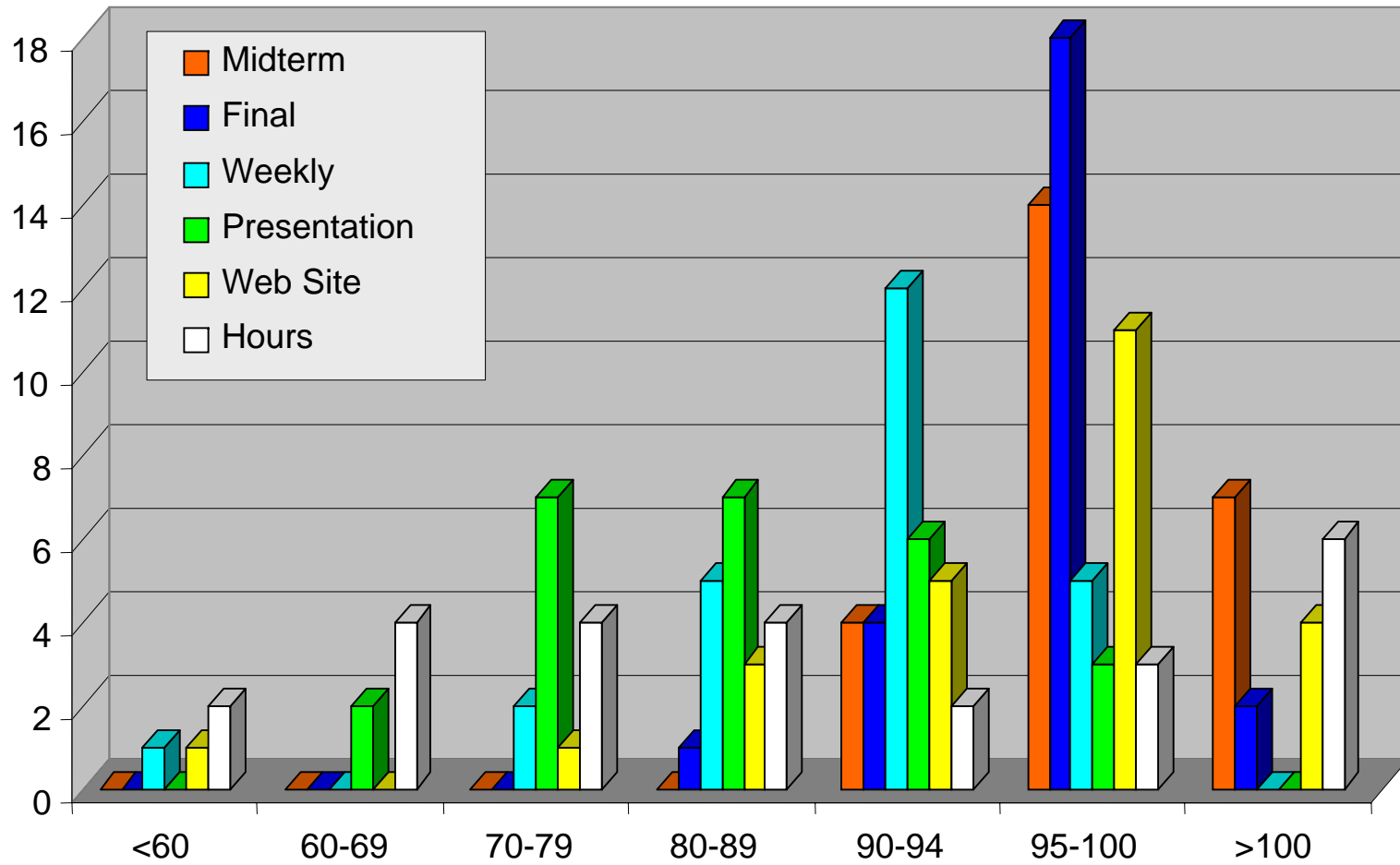
Timeliness, completeness of deliverables	20%
Initial project proposal	20%
Presentation	10%
Web site	10%
Final project proposal/Component list	20%
Overall Effort	20%

Senior Design Fall '05 Final Grades

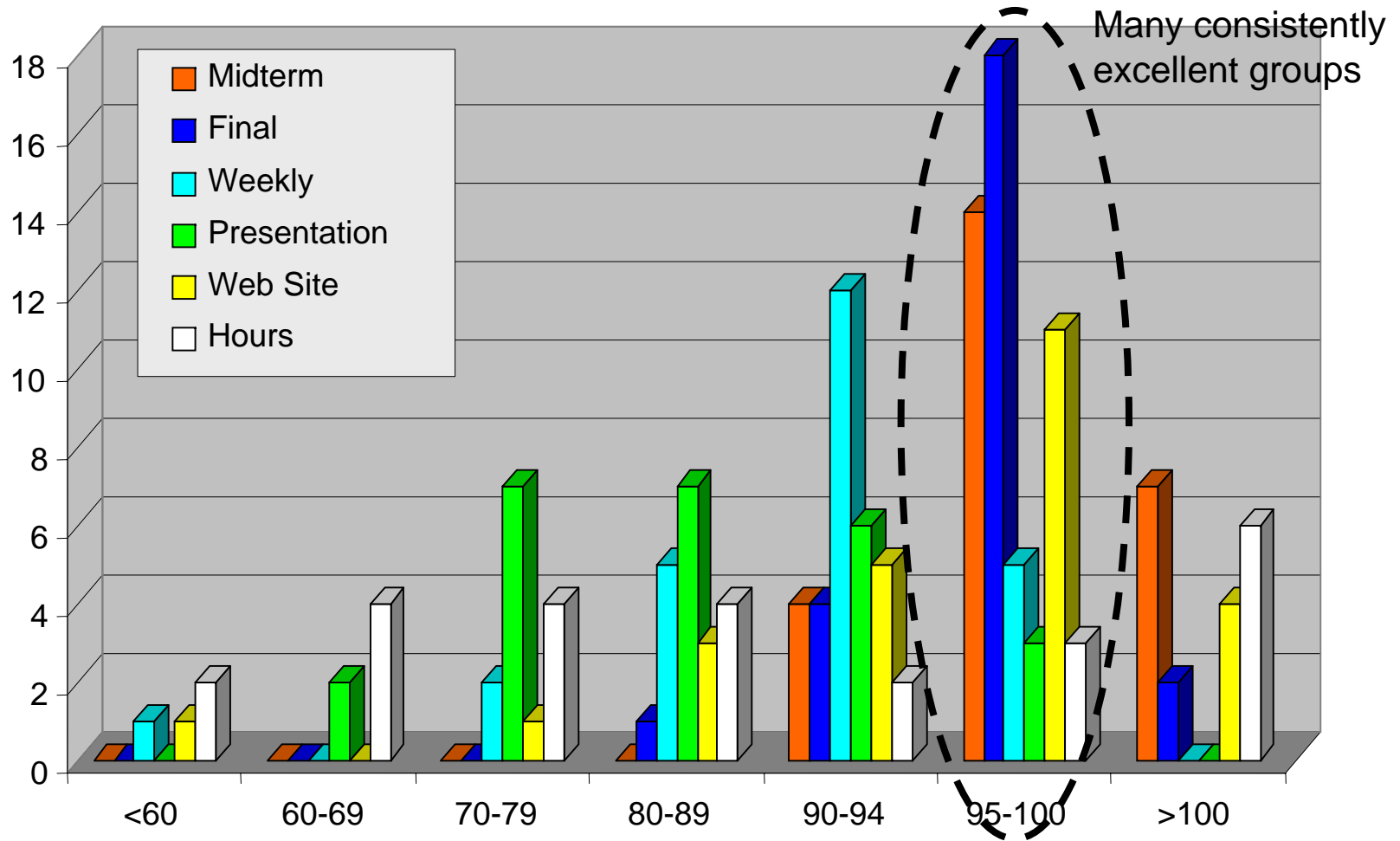


Note: 4 group grades are effective average grades – members were given individual grades

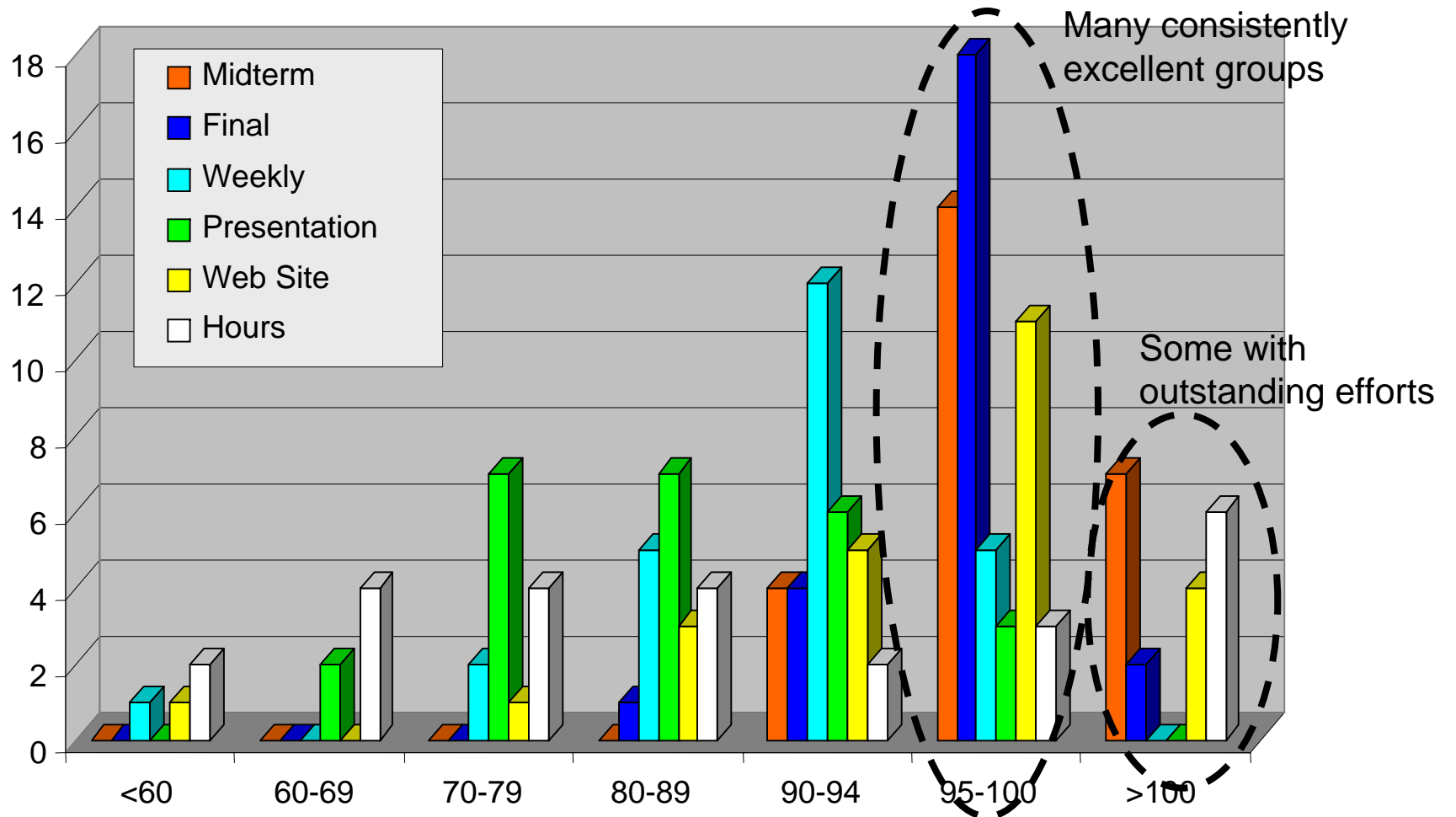
Components of Coordinator Grade



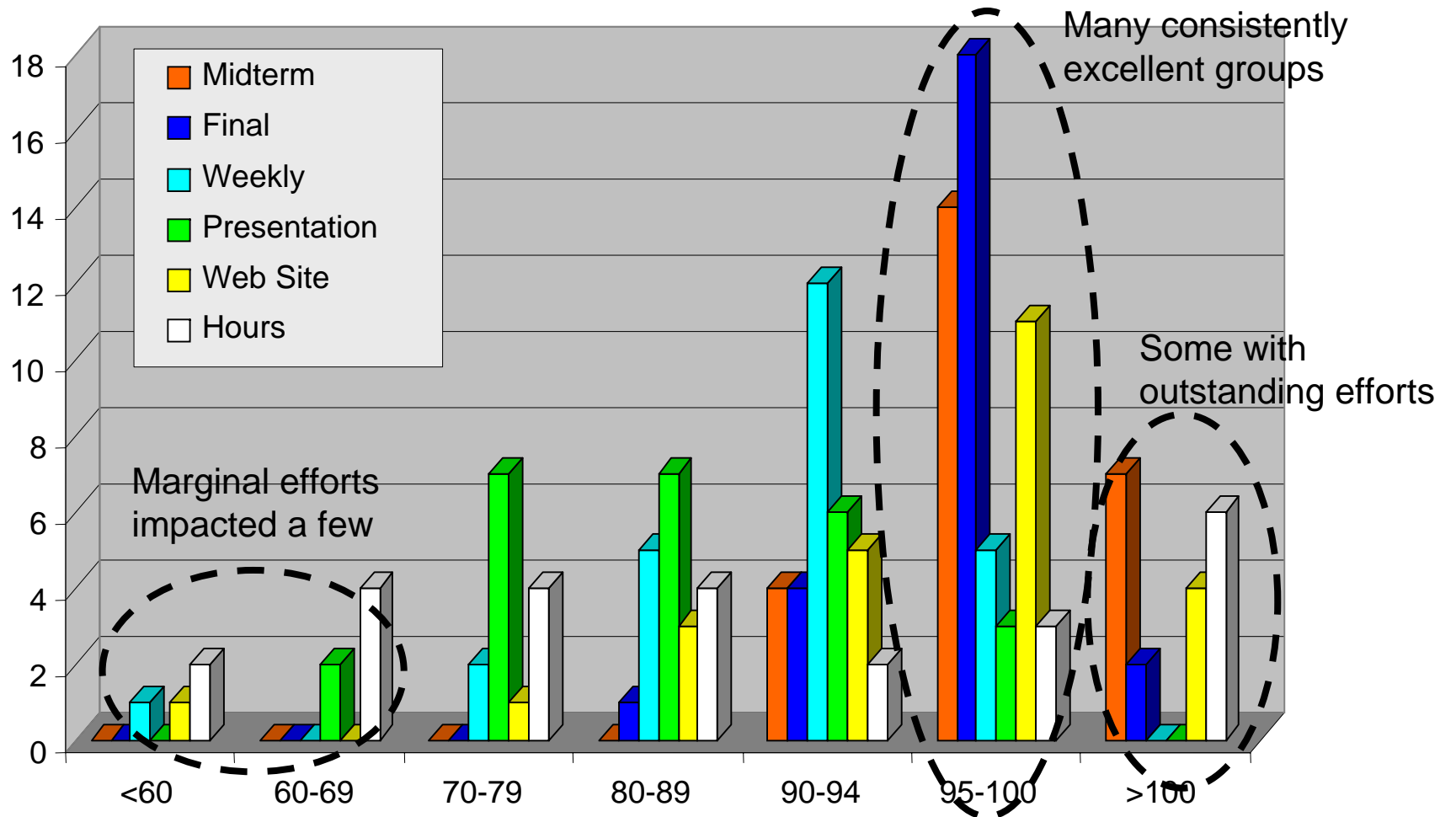
Components of Coordinator Grade



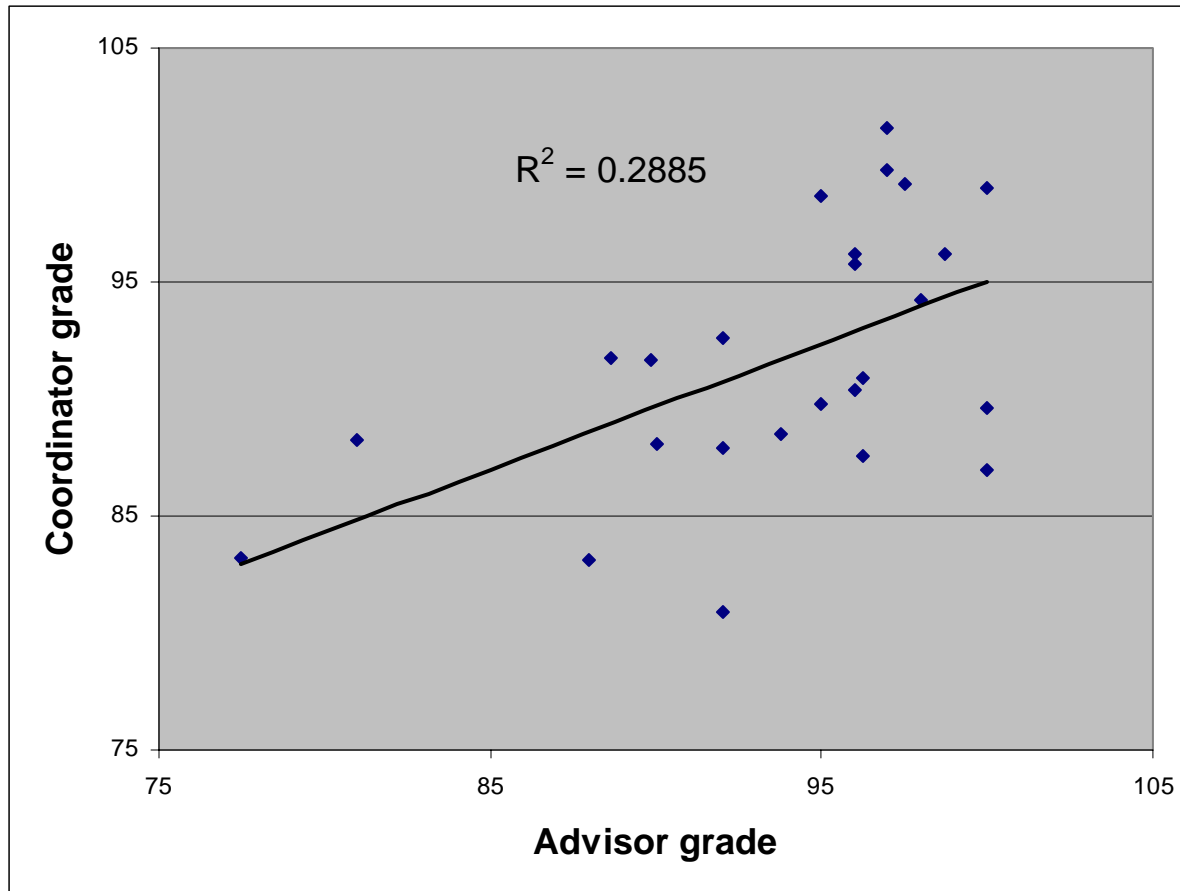
Components of Coordinator Grade



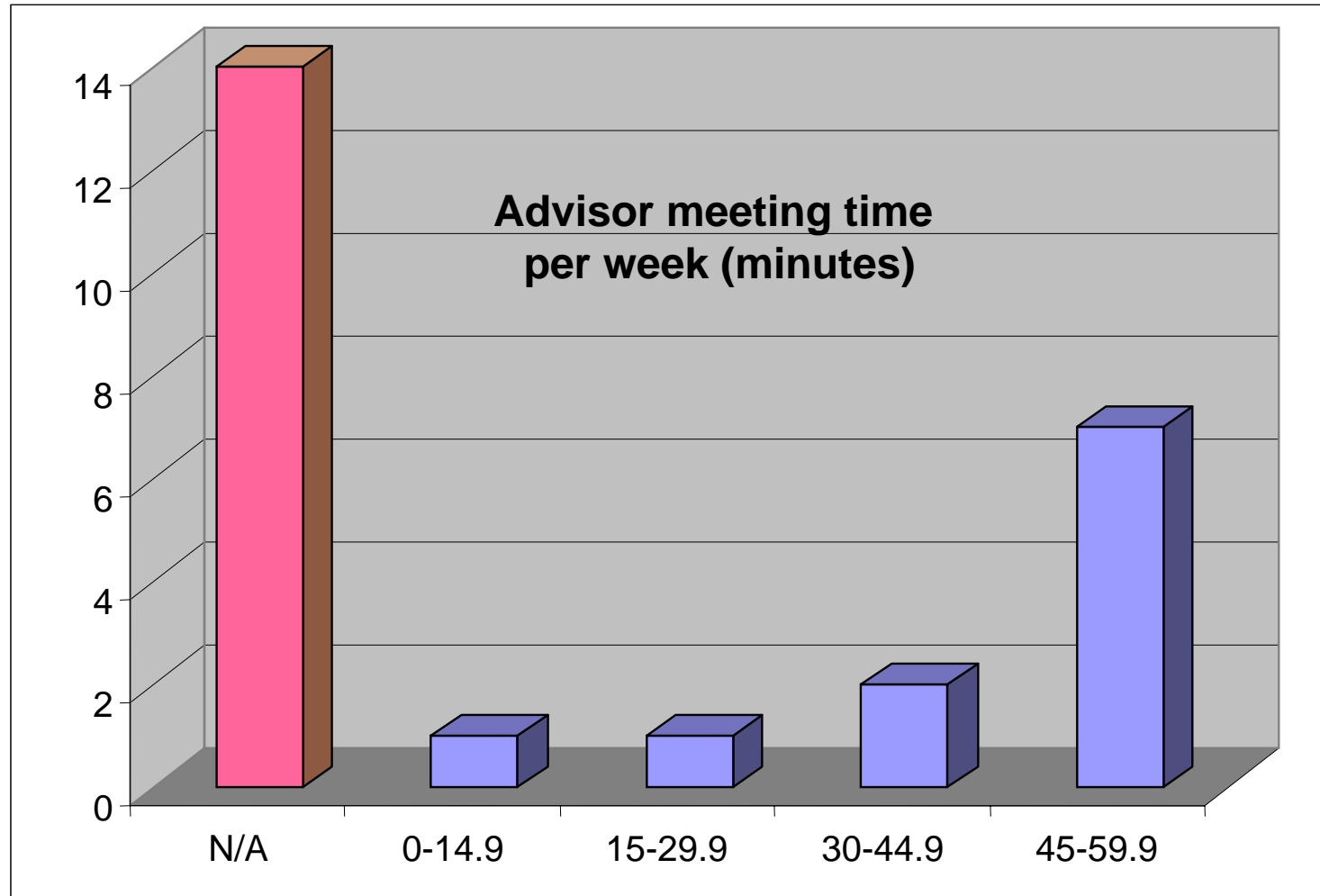
Components of Coordinator Grade



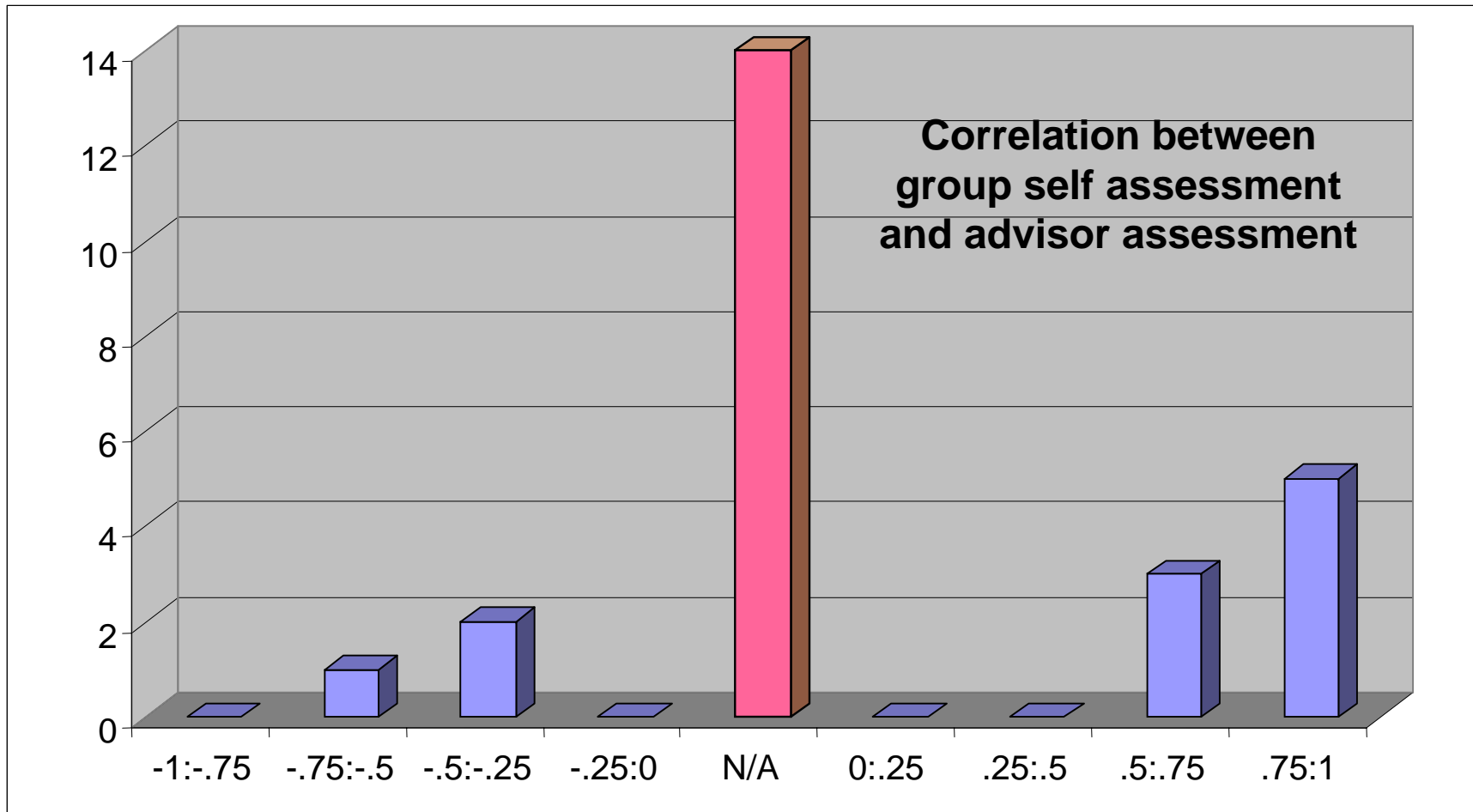
Grade Correlation



Course Metrics



Course Metrics



Deliverables Schedule

- Weekly reports are due **weekly** by Noon, Monday.
 - Both Group Weekly reports and individual group effectiveness reports.
 - To ensure proper credit, email separately, include group number and type of report in email subject
- Web sites will be graded the 15th of each month. **All** weekly reports, interim and final reports, presentations, and brochures must be posted on web site immediately after due date, hosted on panda.ece.stevens-tech.edu
- Interim project report due Tuesday after Spring Break (3/21/05)
- Design Day is April 26th
 - Details will be provided later including Design Day brochure requirements
 - Electrical power, network connections, and other needs will be identified ~midterm
- Final Report due Tuesday, May 2nd

Other items

- Senior Design expense reimbursement:
 - At the end of the semester
 - For items required for Senior Design
 - \$250 per group
 - Items that are paid for by the ECE Department must be returned to the ECE Department
- Class schedule:
 - If we meet, it will be 3-4 on Tuesday (based on last semester's survey, subject to change)
 - Classes will meet less frequently in Spring 06 than in Fall 05
 - You should be working with groups and advisor.
- Lab equipment and supplies
 - See me for specialty items and passive components
 - Coordinate PCB design, lab space access with Palak Amin
 - See Stu Tewksbury or me to borrow test equipment
- Rochester Institute of Technology IEEE Student Design Competition

Shameless Plug

- If you find one of your electives cancelled due to lack of enrollment or if you just want to take an timely, exciting, relevant course, consider:

CpE450 –Real-time Embedded Systems

Tuesday 10 – 12:50, McLean 106

Free copies of Circuit Cellar each month to all enrolled students